

# OUTCROP

Newsletter of the Rocky Mountain Association of Geologists



Volume 58 • No. 1 • January 2009



## CREST Experiment Probes the Roots and Geologic History of the Colorado Rockies

By R. Aster, J. MacCarthy, Matt Heizler, and Shari Kelley (New Mexico Tech), K. Karlstrom and L. Crossey (University of New Mexico), Ken Dueker (University of Wyoming), and the CREST Team

Introduction:

**General Tectonic Setting of the Colorado Rockies.** *The Colorado Rockies are the climax of an enigma. They present a major young mountain range located approximately 1000 km from the nearest plate boundary (the San Andreas fault, which separates the North American and Pacific plates). In broad global tectonic context, the Colorado Rockies occupy the easternmost extent of the deformed western United States, an unusually broad tectonically active transition zone lying between the San Andreas Fault system and the stable central and eastern parts of our continent (Figure 2).*

The fundamental mechanism for the initial uplift of the Colorado Rockies is widely believed to be low-angle subduction of the Farallon plate during the Laramide Orogeny between approximately 75 and 50 million years ago. Because the oceanic slab was subducting at a low angle, it transmitted sufficient forces to the shallow crust and mantle (the lithosphere) to create great Laramide thrust structures as far east as the Black Hills of South Dakota. Ancillary evidence for low-angle subduction during the Laramide can be found in a paucity (but not total absence) of volcanic deposits during this period, consistent with a cold slab running along the base of a cool lithosphere. The subducting oceanic slab also lost its volatiles to the overlying continent, adding buoyancy and driving uplift of the western part of the North American plate.

However, the Laramide Orogeny was just the first act in a three-act play that has shaped the rugged topography of the western U.S. The second act began

about 35 million years ago when the strike-slip San Andreas Fault system began to form and the Pacific-North America plate boundary transitioned from compressive subduction to the present strike-slip system. This transition had two dramatic effects on western North America. First, the stress across this vast region relaxed and compressively thickened Laramide lithosphere began to gravitationally relax. Dramatic results of this extension include the Great Basin and the Rio Grande rift. Second, the sinking of the trailing edge of the Farallon slab permitted mantle upwelling of underlying asthenosphere to heat the previous slab-cooled lower lithosphere that once resided above the subducting slab. The combination of upwelling mantle, increasingly extensional tectonics, and hydrated uppermost mantle was literally explosive, producing vast volcanism across the western United States. This post-Laramide "ignimbrite flare-up" included a San Juan Mountains super-volcano that erupted from multiple calderas 35-25 million years ago. This is one of the largest recognized volcanic complexes in the global geological

record; the estimated eruptive volume of the San Juan La Garita Caldera complex is as large as 5000 cubic kilometers. The third act of the play, occurring during the last several million years, involves continued interactions between the North American plate and the underlying flowing mantle. These interactions include mantle plumes like the one under Yellowstone, continued volcanism like the Jemez volcano in New Mexico, and ongoing uplifts such



### First Announcement AAPG MID-CONTINENT SECTION MEETING TULSA MARRIOTT SOUTHERN HILLS • OCTOBER 11-13, 2009

Mark your calendars now and plan to join us for a spectacular array of professional and intellectual resources designed to help the next generation (and old hands alike) develop new energy resources for generations to come. We encourage you to submit a 250-word abstract for oral presentation, poster, or either under one of 10 proposed session topics, in keeping with the Meeting's theme, 'Resources for the Generations.' Topics and a submittal form can be found at [www.2009aapgmidcon.com](http://www.2009aapgmidcon.com). Deadline for abstract submittal is **February** Online registration opens **July 1, 2009**. Keep watching for details!



Presented by the Tulsa Geological Society

## Lead Story

as the southern Sierra Nevada Mountains resulting from the upward flow of buoyant asthenospheric mantle replacing downward sinking of parts of the plate. Such upwellings of magma, heat, and fluid may be taking advantage of zones of plate weakness, providing glimpses of how old continental features influence young tectonic expressions. In addition to these tectonic and volcanic processes, the Rockies that we see today have, finally, been heavily sculpted by water and glacial erosion, most notably during the last 3 Ma as climate cooled.

*The CREST Project.* A major new science effort, CREST (Colorado Rockies Experiment and Seismic Transects), recently begun, is designed to help answer questions about how mantle processes beneath

the Colorado Rocky Mountains have influenced their tectonic history. We are currently collecting and analyzing seismic, geochronologic, geochemical, and topographic data to study Earth's crust and mantle in the region. A key aspect of this work is to understand when and why changes in buoyancy forces and dynamic mantle convection forces have occurred since the end of Laramide subduction, as well as to understand current mantle dynamics. CREST was partially motivated by the prior discovery of a poorly resolved low velocity mantle seismic anomaly underlying the central Colorado Rockies, which we call the Aspen Anomaly (Figure 1; Figure 2). The Aspen Anomaly lies somewhere between the uppermost mantle and, perhaps, as deep as many hundreds of kilometers. It is

part of a collection of major upper mantle velocity anomalies beneath the western United States that include Yellowstone (recently confirmed to be a mantle plume extending at least 600 km into the mantle) and the Rio Grande Rift-Jemez region (which is largely limited to the uppermost 300 km of the mantle). Testable hypotheses regarding the nature of the Aspen Anomaly tend to involve entangled processes that are difficult to isolate. It may be a region of broad scale mantle upflow associated with global convective flow: the flow pressures dynamically raising and continuing to support the Rockies today. Alternatively, the Aspen Anomaly may manifest hydrated lower lithosphere associated with

Continued on page 8 >>

# Looking for Exploration Opportunities?

① Bakken Project  
Geology, Stratigraphy, Sedimentology and Hydrogeology  
Phase I - SE Saskatchewan Bakken Study  
Phase II - North Dakota Bakken Study

② Hydrogeology of the Williston Basin  
North Dakota, Montana and Canada

③ Hydrodynamics of the Milk River  
Alberta, Saskatchewan and Montana

④ Hydrogeology of the Wind River Basin  
Wyoming

⑤ Hydrogeology of the Greater Green River Basin  
Wyoming and Colorado

For more information on these studies contact Cheryl Wright  
Phone: (403) 269-3644, E-mail: [ideas@canadiandiscovery.com](mailto:ideas@canadiandiscovery.com)

**GDGC**  
GEOLOGICAL  
CONSULTANTS LTD.

**RAKHIT**

Canadian  
Discovery Ltd.  
[www.canadiandiscovery.com](http://www.canadiandiscovery.com)

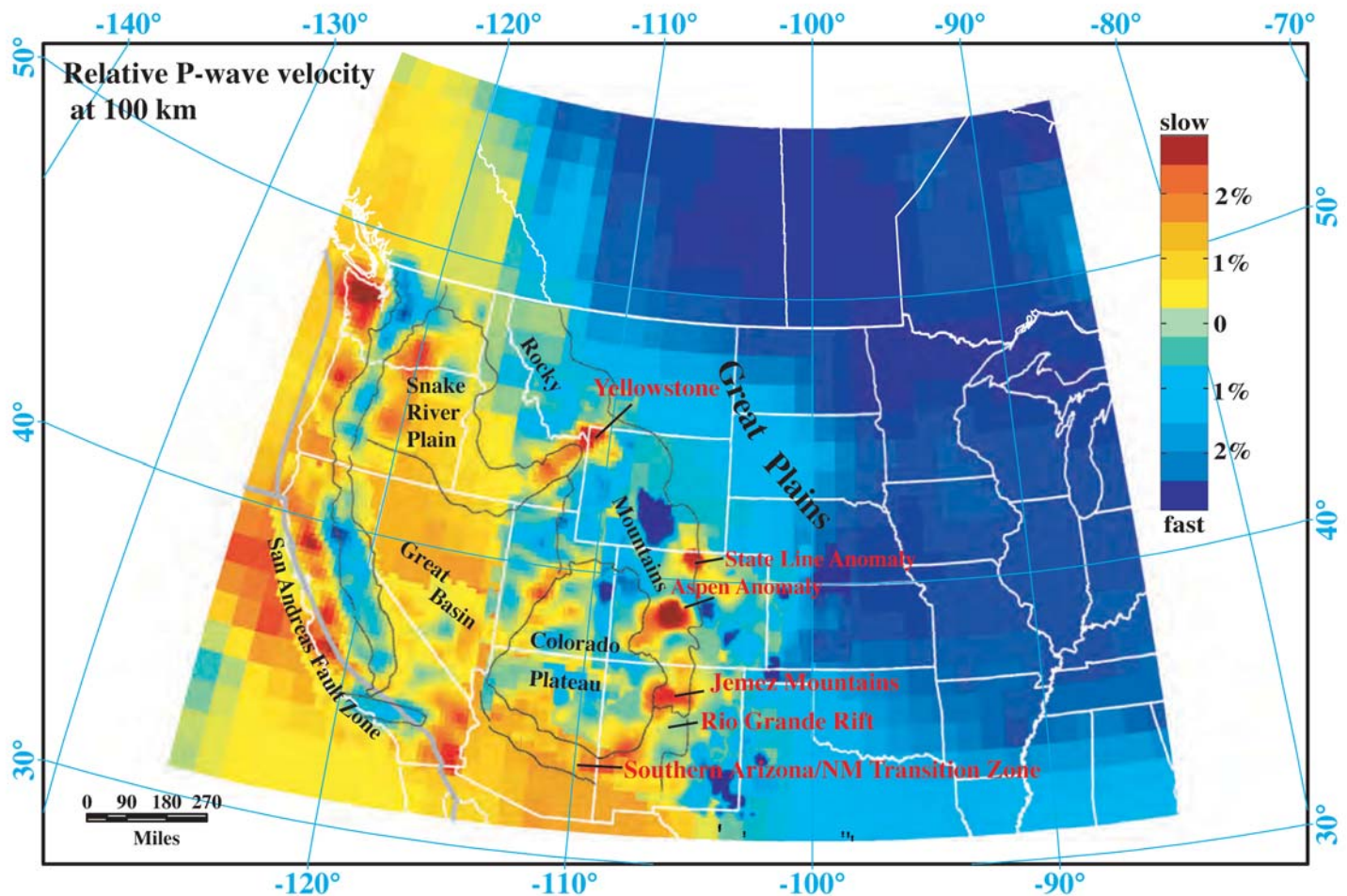


Figure 1. Western United States P-wave seismic velocity estimated at a depth of 100 km (c/o Ken Dueker; after Humphreys et al., 2003). Major low velocity anomalies in beneath the Rocky Mountain Region are labeled. CREST is focusing on the nature and influence of the presently poorly resolved Aspen Anomaly beneath the Colorado Rockies. CREST, EarthScope USArray, and other ongoing experiments are presently making dramatic strides in improving the resolution and accuracy of such mantle maps.

the Colorado Mineral Belt, which is a Proterozoic lithosphere-scale zone of weakness that likely originated at the time of continental accretion. Ancient architectural sutures within the continents are known to widely influence recent and present-day tectonics and volcanism (the Jemez Lineament in northwestern New Mexico is a prominent example). Emerging evidence that the high Rockies above the Aspen Anomaly may be tectonically active and currently uplifting includes active degassing of deeply derived gases rich in  $\text{CO}_2$  and with high  $^3\text{He}/^4\text{He}$  ratios that are found in most of the region's

hot springs. Because  $^3\text{He}$  represents escaping primordial gases that are a relic of planetary accretion, high  $^3\text{He}/^4\text{He}$  ratios are a clear signature of volatile connections between the mantle and the surface.

CREST is taking place during a revolutionary period in seismic imaging that seeks to clarify how the North American continent is and has been shaped by mantle processes. Advances in portable seismographic instrumentation during the past 20 years have now made it possible for researchers to deploy arrays of up to thousands of state-of-the-art seismic recorders anywhere on the solid

surface of the planet. In parallel with this revolution in instrumentation, a variety of innovative techniques have been developed to form detailed seismic images. Generally, these imaging methods are of two types: 1) we can look for seismic layering that shows up as velocity discontinuities (for example the Moho discontinuity at the base of the continental crust, a zone of interesting complexity in the Rockies) and 2) we can create tomograms (analogous to CAT scans) that reveal bulk mantle seismic velocity structure (for example the low velocity domain of the Aspen

Continued on page 10 >>



REGISTER EARLY AND SAVE!

If you're looking for global  
E&P opportunities or JV partners  
you'll find them here.



APPEX 2009 ▶ 3-5 March ▶ London

Farm-Outs • New Ventures • New Regions • Asset Swaps

Mark your calendar to attend the 8th annual APPEX London Prospect and Property Expo, 3-5 March 2009, at the Business Design Centre in London. APPEX is the perfect place to meet and network with a truly international audience of key industry senior managers and government representatives. APPEX brings together a who's who of host governments, NOCs and independent oil companies to speak and exhibit, so why make cold calls when you can network in person to form mutually beneficial business relationships?

### The revised 2½-day program includes:

- ▶ More Prospect Forum sessions
- ▶ More networking opportunities with longer breaks
- ▶ New themed speaker sessions to complement focused regional sessions

#### Day One: 3 March 2009

- ▶ Regional: NW European Session
- ▶ Prospect Forum
- ▶ Lunch
- ▶ Prospect Forum
- ▶ Finance Forum
- ▶ Sponsored Reception

#### Day Two: 4 March 2009

- ▶ Theme: Unconventionals Session
- ▶ Prospect Forum
- ▶ Lunch
- ▶ Prospect Forum
- ▶ Regional: Far East Session
- ▶ Sponsored Reception

#### Day Three: 5 March 2009

- ▶ Theme: Global Carbonate Potential
- ▶ Regional: Africa/Middle East Session
- ▶ Lunch
- ▶ Short Courses/Seminars
- ▶ Farmout Presentation
- ▶ Conference Closes
- ▶ Exhibition Closes

[www.APPEXLondon.com](http://www.APPEXLondon.com)

## The CREST Network

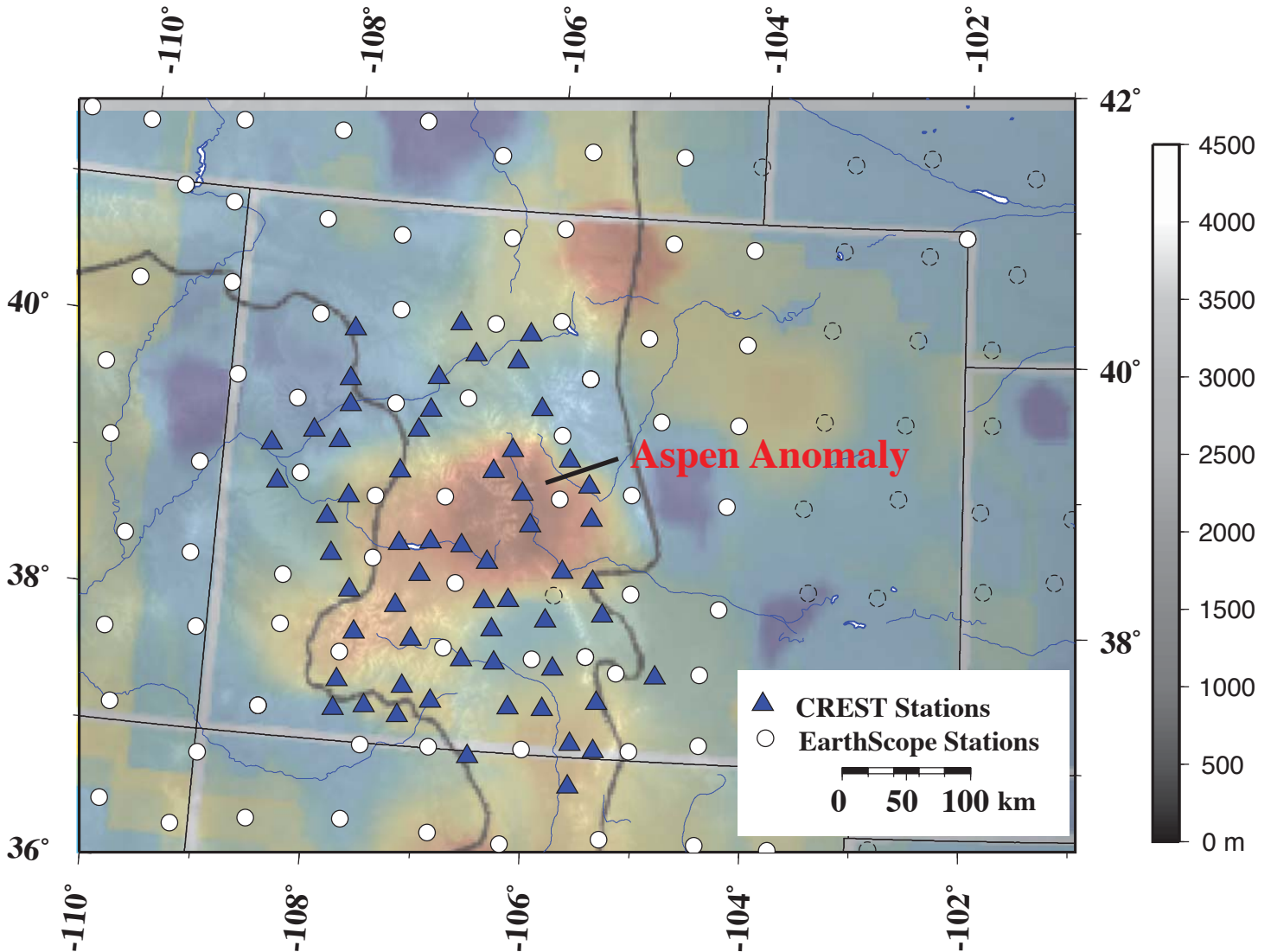


Figure 2. Close-up view of the topography and underlying mantle velocity structure at 100 km (from Figure 1), superimposed on gray-scale topography. Note the geographic association of the Aspen Anomaly with the high Rockies. Symbols show extent of existing or planned (dashed) seismograph stations.

Anomaly). Much of this imaging is done by recording how long it takes seismic waves to reach a given instrument from large earthquakes that occur in Indonesia, South America, and elsewhere around the globe. The distribution of global earthquake sources, as well as use of ambient noise imaging techniques; typically make it possible to form state-of-the-art images of mantle structure after about a year and a half of continuous

seismic “listening.”

A large number of studies in the western United States and elsewhere during recent years have abundantly demonstrated that strong mechanical, volcanic, and geochemical coupling exists between deep crustal and mantle processes such as extension, lower crustal eclogitic delamination, and small-scale convection and upper-crustal tectonics. Partially driven by these remarkable observations

of dynamism at the lithosphere-asthenosphere scale, EarthScope, a vast deployment of geophysical instrumentation, including GPS and seismometry across the United States was initiated in 2003. EarthScope will probe the deep structure of the entire conterminous U.S. with a 2000 station moving network of seismographic stations, dubbed USArray, through 2013, with a subsequent deployment planned for

Alaska. At present, USArray is deployed between the northern Rockies and the southwestern U.S., and CREST has recently complemented this seismograph deployment with an additional 59 stations (Figure 3) specifically focused on the region of the Aspen Anomaly. The combined USArray/CREST instrumentation constitutes one of the largest and densest seismic arrays currently deployed on the planet.

CREST will produce new 3-d images of the present Rockies. However, the fourth dimension is time.

In imaging the state of the lithosphere, we also need to understand the rich prior history of North America. An important CREST component is a new suite of geochronology measurements designed to clarify patterns of Cenozoic magmatism and refine the timing of basaltic volcanism. This is being carried out with  $40\text{Ar}/39\text{Ar}$  dating, focusing on a wide distribution of Laramide-age plutons within the Colorado

Mineral Belt. The timing of uplift and erosion is being explored using samples collected from key locales throughout the study area via apatite fission track and the  $(\text{U}+\text{Th})/\text{He}$  thermochronology methods which measure rock cooling histories related to exhumation. Additional key constraints on uplift history are being gathered from incision rate estimates derived from drainage profiles in

the major river systems and other topographic constraints.

CREST will ultimately produce, we expect, a newly clarified understanding and level of geodynamic modeling of the current tectonic forces and processes of the Colorado Rocky Mountains, and their ties to deep Earth processes. We also hope that this will significantly enlighten our understanding of the formation and evolution of this region. During the past decade much has been learned, and many further questions have arisen, about the complex interactions

landscapes, but also to inform global understanding of plate tectonics and the histories of the continents. The enigma of the Colorado Rockies is that they are a major mountain range over 1000 km from the plate boundary. The resolution of this enigma is coming from a better realization that the mountains are a manifestation of a wide deforming plate margin domain that is strongly coupled to deep mantle processes, and demonstrates that critical plate boundary processes exist not only at the edges, but also at the bases of moving plates.

### Acknowledgments

CREST is supported by the National Science Foundation Continental Dynamics Program under award 0607693. We thank the IRIS PASSCAL Instrument Center at New Mexico Tech for facility support and field assistance. Data collected will be available through the IRIS Data Management Center. The facilities of the IRIS Consortium are supported by the National Science Foundation

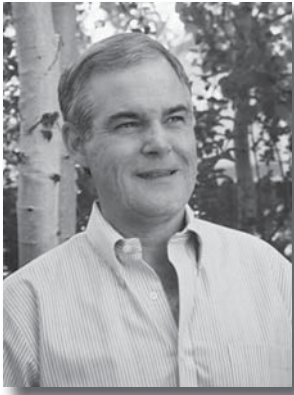
under Cooperative Agreement EAR-0552316, the NSF Office of Polar Programs and the DOE National Nuclear Security Administration. The CREST team includes Andres Aslan, Rick Aster, Clem Chase, Dave Coblenz, Laura Crossey, Ken Dueker, Lang Farmer, Matt Heizler, Eric Kirby, Eric Leonard, Colin Shaw, and Jolante van Wijk, and graduate students

Continued on page 21»



Figure 3. Michael Johnson (New Mexico Tech IRIS PASSCAL Instrument Center) installing a CREST seismograph near Silverton, Colorado, in August 2008.

between continental history and structure and today's active tectonics. The Rockies are a key locality to study these interactions, because they represent a region where coupling between old structures (even those dating back to the Proterozoic) and recent tectonics are strong. As such, the region is a natural laboratory to help us not only better understand one of America's iconic scenic



# President's Column

by James Mullarkey

## Off we go into another busy and exciting year

Well; a deep subject I know. Let's all pull together and get the year of 2009 off to a rousing start! My name is James Mullarkey, and I am a consulting geological engineer based in Littleton, Colorado. As RMAG's President for the next year, I would like to start off by saying that if you are aware of any needs or improvements for our organization, do not fail to let me know about them. As the society's incoming President, I would like to set two objectives; increasing energy savings, and increasing the pool of RMAG volunteers. I hope that each of you will consider contributing to the achievement of these goals.

Energy savings by Americans and the affluent global community can be, and needs to be part of the solution to alleviating the world's dependence on energy generated from hydrocarbons in their liquid and gas phases. Using a bridge analogy, borrowing freely from Dr. Scott Tinker, president of AAPG, and Mr. Boone T. Pickens, there needs to be a bridge to allow the United States and the world to move from the current dependence on oil and gas for the majority of energy generation to a much more diversified mix of sources of energy generation. Obviously, investment of some finite amount of time and the construction of multiple bridges will be necessary to allow the global community to achieve this. Energy savings is one bridge that any individual can contribute to building.

I think that energy savings can be a part of a bridge that allows us to travel from the hydrocarbon dependence side of the river to the more diversified energy use side. Changing our habits is the more difficult path, as opposed to maintaining the status quo, but it is a path that needs to be followed for the greater good of our children and future generations.

Dr. Tinker has said when building a bridge that he usually starts with something he can accomplish, and this seems like a good idea to me. I plan to be able to say my family has installed new storm doors in a future column. So, paraphrasing Dr. Tinker in his speech at the Rocky Mountain Section meeting this past spring, let's brag about our energy saving accomplishments, and encourage others to do the same.

To start this off, without mentioning names, I'll do a little bragging for an RMAG member who lives in downtown Houston, and who was taking the lead back in 2006, and probably even before that, by being proactively environmentally conscious and being proud of that fact. This member was shining his light to help others see when he spoke with pride about the fact that he and his family put out only one trash can for the garbage pick up each week, besting their neighbors by a trash can or two, or three, all because they were consuming thoughtfully and recycling rather than consuming voraciously and tossing,

filling trash cans and landfills willy-nilly. As you know, geologists are in general also environmentalists, with a long term outlook so I am looking forward to hearing many tales that top this one.

Here is an energy saving fact for this month: A 52" LCD screen television uses 58% of the energy of a 50" plasma screen television, 667 kilowatthours per year (kWh/yr) versus 1,159 kWh/yr; reference: ConsumerReports, October 2008, p. 23, [consumerreports.org](http://consumerreports.org).

With regard to the second objective, I would like to start with a volunteer initiative, as many have before me. Our new president, Mr. Obama, has a plan to expand national and community service programs and I am convinced RMAG's 2500 plus members can be a major subset of this larger group of American volunteers!

I think I would like to focus our volunteer plan around creating a list of volunteers along with specific areas of interest so that the RMAG office staff, committee chairs, and the RMAG board could use the list to fill volunteer opportunities as they come up, which is on a regular basis, monthly if not weekly. With the emergence and increasing participation by our younger members, the network meeting numbers have steadily increased during 2008, and we are looking forward to this

Continued on page 21»



# RMAG November Board of Directors Meeting

By Nick Harris, Secretary  
(geologistnick@yahoo.com)

While the 2009 Board will approve the RMAG budget for next year, the 2008 Board is responsible for preparing a preliminary budget. In our last meeting, we debated this preliminary budget and recommended one that is similar to the current year's budget. Although we noted concerns relating to the recent drop in oil prices, it is our judgment that RMAG is exposed to limited risk in major areas of expenditure, specifically symposia and short courses. Although one year's record doesn't necessarily translate to success in the following year, we have had a strong 2008 with substantial gains in membership, strong attendance at technical events, and a positive balance sheet. In 2009, RMAG will also receive significant income from the Rocky Mountain Section – AAPG meeting held last summer.

Progress was reported on several publications: the Paradox Basin guidebook should be published early next year; the Uinta Basin guidebook has received sufficient sponsorship to pay for the volume; and the Board approved a guidebook with a focus on structural geology applied to petroleum exploration for publication in 2011. Planning for technical events for 2009 is also well underway, including the 3D Seismic Symposium and the Fall Symposium on resource plays, and a variety of short courses. The first of these courses will be in January – a structural geology course by Don Stone. A pair of courses on Petra and Geographix will be offered in the spring. <<



**MAZZULLO ENERGY CORP.**

**Louis J. Mazzullo, President**  
**Certified Petroleum Geological Consulting**  
**AAPG CPG #4693**

- SPECIALIZED GEOLOGICAL ADVISORY AND PROJECT SERVICES FOR EXPLORATION AND DEVELOPMENT
- 32 YEARS EXPERIENCE IN WESTERN U. S. BASINS, WITH SPECIALTIES IN PERMIAN, WILLISTON, AND SAN JUAN-PARADOX BASINS
- PETRA AND KINGDOM 3D-BASED MAPPING AND REGIONAL ANALYSIS, WITH SEVERAL GRAPHICS PLATFORMS FOR PRESENTATIONS
- LITIGATION AND OIL COMMISSION SUPPORT

19833 West 56th Place  
Golden, Colorado 80403-2190  
Ph (303) 384-9668 Fax (303) 384-9667  
E-mail: [lou@MazzulloEnergy.com](mailto:lou@MazzulloEnergy.com)

**For more information, visit our website**  
**[www.MazzulloEnergy.com](http://www.MazzulloEnergy.com)**

SINCLAIR PETROLEUM ENGINEERING, INC.

- Shale, CBM, Tight Gas, Primary, Secondary
- Reservoir Modeling and Development
- Reserve Reports, Property Evaluations
- Production Forecasting

John W. Sinclair, Ph.D., P.E.

Licensed in CO, UT, MT, & WY

307-347-3293 (o)  
307-431-6382 (c)  
[sinclair@bresnan.net](mailto:sinclair@bresnan.net)

GEOLOGICAL CONSULTANTS

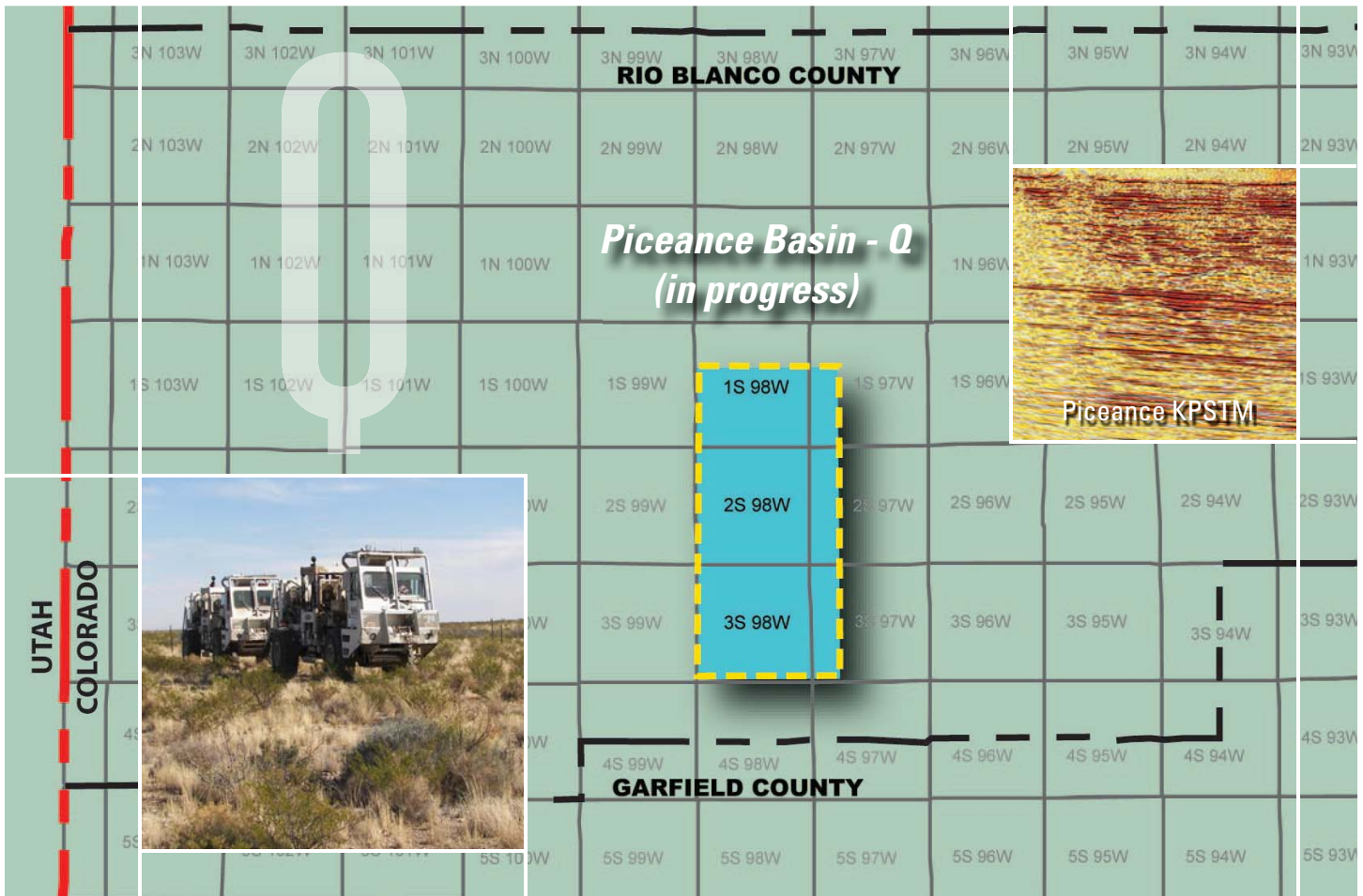
*32 years experience*

Harold K. Ewald, III  
*Geologic Advisor*

7651 S. Wellington St.  
Centennial, CO 80122

phone:(303)794-1463 fax: (303)794-3677  
email:[faiyoum@aol.com](mailto:faiyoum@aol.com)  
alt. email: [halewald@yahoo.com](mailto:halewald@yahoo.com)

# Experience Q-Land integrated solutions



## Game-changing advances in land acquisition coming to the Piceance Basin, August 2008

The unique abilities of our Q-Land\* seismic acquisition system, in seamless combination with the expertise of Schlumberger Data & Consulting Services (DCS), are helping image challenging geologic targets and also incorporate well-calibrated seismic and derivative products - facilitating the generation of earth models.

These latest advances in seismic and reservoir technology will be integrated in our latest Q-Land multiclient survey providing a full suite of benefits including:

- Superior signal-to-noise ratio
- Broadband sources and receivers
- Digital Group Forming of single-sensor data
- DCS integrated reservoir characterization services

For more information about our Q-Land multiclient products, call +1 713 689 1000.

**Reducing the E&P risk in North America today.**

# Q-Land

[www.westerngeco.com/Q-Land](http://www.westerngeco.com/Q-Land)



\*Mark of Schlumberger © 2008 Schlumberger



# In the Pipeline

January 9, 2009

**DIPS Luncheon.** Darrell Hoyer and Roger Young. "Seismic Petrophysics in Tight Gas Sands-A Piceance Basin, Mesa Verde Example." For reservations, contact Bob Zilinski at rezilin@aol.com or call 303-885-0615.

January 13, 2009

**Desk and Derrick Club Luncheon.** To make reservations email saundra.thompson@anadarko.com

January 16, 2009

**RMAG Luncheon.** Pete Stark. "Perspectives on U.S. Natural Gas."

January 20, 2009

**DWLS Luncheon.** Max Peeters. "Selection of Shaly Sand Methods and Parameters." Reserve through Sarah.Voight@Weatherford.com or 720-946-1374.

January 27, 2009

**RMAG Short Course.** Don Stone. "Review and Interpretation of Rocky Mountain Foreland Structures."

January 27, 2009

**RMS-SEPM Luncheon.** Lyn Canter, Orion Skinner, and Mark Sonnenfeld. "Facies and Mechanical Stratigraphy of the Middle Bakken, Mountrail County, North Dakota." For reservations, email Luncheons@rmssepm.org or call Steve Stancel at 720-929-6536.

January 28, 2009

**Oilfield Christian Fellowship.** To RSVP call Barb Burrell at 303-675-2602 or e-mail OCF-DenverChapter@pxd.com.

January 29, 2009

**SIPES Luncheon.** For reservations call the SIPES Denver Chapter message line at 303-730-2967, or leave a reservation via email to sipesdenver@yahoo.com.

February 5, 2009

**RMAG Luncheon.** Lou Mazzullo. "Applying Reservoir Models to Effective Exploration for Subtle and Unconventional Traps: Examples from the Permian Basin."

February 5-6, 2009

**NAPE.** See page 16 for more information.

February 9-13, 2009

**AAPG Winter Education Conference.** Houston, TX.

March 27, 2009

**RMAG-DGS 3D Seismic Symposium.** "Reveal the Rockies." See page 24 for more information. <<

If you have any events that you would like to post in this column, please submit via email to Holly Sell at [hsell@nobleenergyinc.com](mailto:hsell@nobleenergyinc.com) or to the RMAG office at [rmagdenver@aol.com](mailto:rmagdenver@aol.com) for consideration.

## Geologists! The Boom is Back!

I'll sell your exploration prospect anywhere in the USA.

Minimum size 5 MMBOE

You must have a controlling lease position.

Success fee only, I get paid when you do.

Non-exclusive contract

Contact: Dr. Robert W. Milam, Jr.

AAPG Certified Petroleum Geologist No. 5320

State of Texas Licensed Geologist No. 604

Owner, Texas Geological Inc., established 1996

Tel: 713-221-3210

email: [robert.milam@juno.com](mailto:robert.milam@juno.com)

Fax: 832-201-8530; P.O. Box 3289, Spring, TX 77383

### SOUTHERN PICEANCE BASIN

HIGH-RESOLUTION MAGNETIC DATA  
AND STRUCTURAL INTEGRATION

ENHANCE SEISMIC INTERPRETATION  
PREDICT FRACTURE RESERVOIR TRENDS  
SCREEN PROSPECTS & REFINE BASIN MODELS

DIGITAL GRIDS & MAPS FOR IMPORT  
FRACTURED RESERVOIR EXPLORATION MODEL

Contact: Thomas Hoak, Ph.D  
303-933-5805 [kestrelco@comcast.net](mailto:kestrelco@comcast.net)

### AUTOMATED MUDLOGGING SYSTEMS

Mudlogging • Wellsite Consulting • CBM evaluation  
Log Evaluation

**Bill Donovan**

Geologist • Petroleum Engineer • PE

780 E. Phillips Dr. S. • Littleton, CO 80122  
(303) 794-7470 (voice) • (303) 794-4838 (fax)  
[donovan@mudlogger.com](mailto:donovan@mudlogger.com)  
[www.mudlogger.com](http://www.mudlogger.com)

# INTERNATIONAL PAVILION

A showcase for international exploration and investment opportunities

NAPE is pleased to bring to NAPE EXPO 2009 the INTERNATIONAL PAVILION. "Visit the World" and make personal contacts with energy ministers, state licensing authorities, national oil company executives and key players from international oil companies.

- ▶ **Information exchange & networking to facilitate partnering opportunities**
- ▶ **Review new development & exploration activity**
- ▶ **Preview current & upcoming licensing rounds & data packages**

**The International Forum**  
Wednesday, February 4th

*"Where will tomorrow's  
Oil and Gas Come From"*

For more Information  
[www.napeexpo.com](http://www.napeexpo.com)

See the International Pavilion at

**NAPE** OIL  
&  
EXPO GAS

February 5-6, 2009

THE INTERNATIONAL PAVILION IS SPONSORED BY THE FOLLOWING COMPANIES

**petroWEB / IHS / TGS-NOPEC**

**British Petroleum / CGGVeritas / Deloitte / Devon / EGI  
Noble Energy / Oil and Gas Investor / Remora Energy / Shell**

**Access Exploration / Addax / Anadarko / Apache / Ginger Oil  
Newfield / Nexen Petroleum**

[www.internationalpavilion.com](http://www.internationalpavilion.com)





## Northern U.S. Rockies & Williston Basin Digital Geological Edge Set

- \* detailed, accurate subsurface geology in Shape file format for use in Petra, GeoGraphix, etc.
- \* includes: basins, structures, field outlines, intrusions, subcrops, anhydrite barriers, channels, shorelines and facies trends
- \* fully supported with detailed, full-scale cross-sections and hard copy wall maps

developed by Sherwin GeoEdges Inc.  
[www.geoedges.com](http://www.geoedges.com)

for information or a presentation contact:  
[joelharding@geoedges.com](mailto:joelharding@geoedges.com)  
ph 403 870 8122

also available:  
**Western Canada Digital Geological Edge Set**

**INNOVATIVE  
GEO-TECH  
RESOURCES LLC**

GEO-TECH  
CONSULTING,  
MAP DIGITIZING  
& MUCH MORE

Erin Capra

303.482.2113 phone  
720.338.1067 cell

ecapra@innovativegeotechresources.com

## RMAG Field Trip



Paradox Basin Fieldtrip participants raft the San Juan River with Wild Rivers Expeditions out of Bluff, Utah. Photo by Debra Higley-Feldman.

This photograph shows the shared west dipping limb of Raplee Anticline and the Mexican Hat Syncline about 1.5 miles upstream the village of Mexican Hat Utah, on the San Juan River. In the core of the anticline are the grey beds of the Upper Ismay interval and lower Honaker Trail Formation. These are overlain by the red deposits and marine limestones of the upper Honaker Trail Formation. The Permian Halgaito Formation forms the horizontal red strata on either side of the river. Photo by Jim Ligon.



## Luncheon Programs – January 16th & February 5th

---

### Perspectives on U.S. Natural Gas

By Pete Stark, IHS Energy, Inc., January 16, 2009

**On the positive side, innovative gas producers have “broken the code” to unlock productivity from shale gas and other unconventional reservoirs.**

Three global mega-challenges have combined to create a perfect storm for world economies. Over the past 18 months focus on the climate change crisis gave way to soaring oil and gas prices and then passed on to the global financial crisis. The U.S. natural gas business has not been unscathed by this turmoil. Unfortunately, a welcomed surge in U.S. natural gas production emerged on the cusp of the economic recession and slumping energy demand. Good news for consumers is the fact that oil and gas prices have dropped 50% or more from first half 2008 highs. These factors, though, pose significant concerns for oil and gas producers and could signal a paradigm shift in U.S. energy markets and policies.

On the positive side, innovative gas producers have “broken the code” to unlock productivity from shale gas and other unconventional reservoirs. Success in the Barnett shale spread to the Fayetteville, Woodford, Haynesville and Marcellus shales with promising tests underway in other important shale source rocks. As a result of higher well productivities in these shales, U.S. average well peak production and EURs increased during 2007, breaking a 10-year decline in these parameters. Correspondingly, U.S. gas production capacity increased by some 4.5% during 2007 and about 9% during 2008. Moreover, recoverable gas resources may have increased by 500 Tcf or more during the past two years. This is good news for U.S. energy security and provides welcome flexibility for future energy planning. In the near term, the surge in gas productivity allowed the recovery of U.S. gas storage to more than 3.4 Tcf during November 2008 – assuring adequate gas for the 2008-09 winter heating season in spite of the fact that 5 Bcf per day of Gulf Coast gas production was curtailed by damage from Hurricane Ike.

There are several negative factors:

## LUNCHEON RESERVATIONS AND INFORMATION

Luncheons will be held at the Marriott City Center at California and 17th St. Please check the event listing in the lobby for the room. People gather at 11:30 a.m., lunch is served at 12:00 noon, and the speaker presentation begins at about 12:20 p.m. The price of the luncheon is \$30.00. Checks should be made payable to RMAG. No reservation is required for the talk only and the cost is \$5.00. Please make your reservation prior to 10:30 a.m. on the Wednesday before the luncheon. Please Note: If you make a reservation and do not attend the luncheon, you will be billed for the luncheon. Cancellations are not guaranteed after 10:30 a.m. the Wednesday before the talk. You may send someone in your stead.

***Your attendance is  
welcomed and encouraged.  
Bring a guest or new member!***

**Call 303-623-5396**



- Natural gas prices averaged about \$9 per Mcf during 2008 but have slumped below \$7 per Mcf and are unlikely to recover much during 2009. With Henry Hub gas at \$7 per Mcf it is estimated that only about 35% of U.S. gas developments yield at least 10% ROR.
- Soaring Rockies gas production has exceeded export pipe capacity with resulting large discounts in gas prices and curtailed production.
- Huge new gas resources in the Ark-La-Tex region and Appalachian basin that have established pipelines and are close to the large consumers may reshape U.S. gas markets.
- Upstream costs continued to increase during 2008 adding to the squeeze on gas wellhead profits. High cost gas plays could suffer substantial drilling cutbacks during 2009.
- The change in administration is accompanied by increasing power for anti-oil and gas politicians. At this time it is not clear if their punitive attitudes toward oil and gas will prevail or if they will forge new clean energy policies that capitalize on secure domestic gas resources.

We will review these factors with respect to future directions for the U.S. gas business.

## Applying Reservoir Models to Effective Exploration for Subtle and Unconventional Traps: Examples from the Permian Basin

By Louis J. Mazzullo, AAPG CPG, Mazzullo Energy Corp., Geological Consulting, Golden, Colorado, February 5, 2009

**A multivariate approach to subsurface analysis should therefore include detailed sample evaluation that calibrates log responses to actual rock sequences.**


Mapping and identification of reservoir facies is a critical first step to the understanding of reservoir development and trend analysis. The use of 3D seismic has benefitted these tasks greatly, enabling us to visualize the stratigraphic sequences within an exploration area to more refined levels than ever before. However, oftentimes our initial evaluation of a new exploration trend area or initial offset development involves picking formation tops and sequence boundaries using well log correlations, and, later on, trying to force these correlations to synthetic seismic ties. This type of approach at times could lead to seismic mis-ties, failure to accurately predict precise formation tops and reservoir trends, and missed opportunities in recognizing more subtle stratigraphic or combination traps. A multivariate approach to subsurface analysis should therefore include detailed sample evaluation that calibrates log responses to actual rock sequences. Several examples of correlation pitfalls from the Permian Basin are presented here. These include applications to the Permian Clear Fork of the Midland Basin, Upper Pennsylvanian Cisco-Canyon and Lower Pennsylvanian Atoka-Morrow sandstones (and associated Chesterian carbonates) in southeastern New Mexico, and the Siluro-Devonian and Ellenburger basin-wide. Each of these formations presents unique challenges to reservoir prediction because of their complex depositional and post-depositional histories.

Some of the problems related to misidentification of sequences or correlations from the Permian Basin have relevance to other basins. Well-to-well log correlations

Continued on page 20 >>

will often cross time units and lead to an improper interpretation of the juxtaposition of depositional environments. Log responses, especially gamma ray signatures, are often similar from sequence to sequence because of the repetitive nature of deposition in cyclic carbonate and clastic regimes. Karsted horizons often show higher gamma ray responses, and are reported on mudlogs as shales, but can be, in actuality, shale-supported karst and cave-fill facies with locally high interstitial porosity. Some of these karst-related facies can contribute substantial hydrocarbon reserves, but are generally overlooked as potential reservoir facies because they appear pessimistically shaly on well logs. There are many well-known structures where Atoka-Morrow sands lay unconformably upon lower Mississippian (Osagian) or older carbonates, absent the entire section in between. In order to effectively explore for the downthrown reservoir trends, it is essential to know the precise stratigraphic sequence and the degree to which Mississippian and younger beds were removed. But it is often difficult to tell the difference among the carbonate formations simply by correlating well logs. Simply mapping a structure on the Silurian-Devonian or Ellenburger is not enough to define a play; it is important to determine the diagenetic and stratigraphic attributes of these rocks below the conventional mapping horizons (e.g., Woodford Shale) in order to more accurately map a prospect and determine offset locations. Karsting is prevalent throughout the lower Paleozoic section, and further confuses the picture. Effective exploration for more subtle, yet lucrative, traps in all these rocks will require more "out-of-the-box" thinking as larger, structured fields are played out. <<

**UNLIMITED HAS JUST BECOME A THREE LETTER WORD**




**UGA™** UNLIMITED GRID ACCESS    **UBA™** UNLIMITED BASEMAP ACCESS    **UWA™** UNLIMITED WELL ACCESS

ArcSDE Geodatabase Supported

**Unlimited access to the most accurate  
Land Grid, Basemap and Well Data on the planet.**

ONLY \$750/month each\*

 **WHITESTAR** [www.whitestar.com](http://www.whitestar.com)

**CALL 1-800-736-6277**

\*Two-year commitment, billed annually.      777 South Wadsworth Blvd., Suite 4-250 Lakewood, CO 80226



influx of energy and ideas from these younger members. We especially want to hear from you, the sub 40 year olds, and get you and your colleagues more involved with the RMAG! I don't really consider myself as a "volunteering type" of person, but I have greatly expanded my horizons and contacts, meeting lots of enthusiastic, interesting people during my volunteer stints, mainly with the RMAG and the Boy Scouts of America. So even if you think that you are not a "volunteering type" of person maybe you should give it a try, I am guessing that it will be rewarding in a variety of ways, many unanticipated. And by the way, all you accredited, active RMAG volunteers, THANK YOU for all your work, and please keep on keepin' on.

I hope you will consider supporting RMAG and stimulating your whole brain, both right and left hemispheres, by registering for Don Stone's short course to be held Tuesday, January 27th. If you would like to volunteer to help with this or any other RMAG activities, please contact me or the RMAG office. There should be strong interest in Don's course "Review and Interpretation of Rocky Mountain Foreland Structures Exploring Descriptive, Kinematic and Dynamic Analyses, and Avoiding Common Pitfalls", based on the attendance at two 2008 RMAG Friday luncheon talks with structural geology themes (abstracts available at [www.rmag.org](http://www.rmag.org)). Don gave one talk on May 16th, "The wrench fault concept - revisited and fortified by modern

seismic evidence" with about 150 in his attentive audience, and Dudley Bolyard gave a talk entitled "Strike-Slip Faults in the Colorado Rockies" on October 17th that was attended and enjoyed by about 100 folks. RMAG volunteer editors, Jerry Cuzzella and Connie Knight have initiated work on a future RMAG publication with a structural geology theme. As far as further opportunities in the 2009 continuing education realm, after the 15th annual 3-D symposium in March, in the second quarter of 2009 RMAG will present a one day short course offering tips to users of two geologic software packages, GeoGraphix and Petra, and the 3rd quarter will feature a one day symposium, chaired by RMAG volunteers Bruce Kelso and Bob Lamarre, highlighting Resource Plays.

In closing, did you hear why it is impossible to keep a secret in a bank? Too many tellers. That's all for this month, have a good month, and let's each take a step forward toward our 2009 objectives. <<




---

## GIS COURSES GEARED TO OIL & GAS

**Intro to ArcGIS for the Petroleum Industry**  
**January 29-30, 2009/8:30-4:00/\$765 per person**  
 Gain hands-on skills and perspectives utilizing ArcMap, ArcCatalog, and ArcToolbox to visualize, create, integrate and analyze industry geospatial data. Course includes early exposure to geoprocessing (basic overview). Ideal for land, geoscience, and engineering staff interested in using GIS in their day-to-day work.

**Modeling and Analysis/Model Automation Using ModelBuilder**  
**February 19-20, 2009/8:30 - 4:00/\$765 per person**  
 Learn how to leverage powerful tools for geoprocessing and model automation – building and sharing reusable models. A planning and critical thinking framework is included – assessing model aims and parameters, developing workflows, considering data issues, selecting tools, engaging experts, and verifying results. Explore how to leverage play fairway analysis, land plays, and more.

Led by instructors with more than 20 years of experience in oil and gas.

- Convenient downtown Denver location.
- Sign-up a colleague and save 10% on your registration.
- Custom group and individual instruction also available.

**Please call or e-mail Deb Grieco for a registration packet today!**  
**[deb@allpointsgis.com](mailto:deb@allpointsgis.com) • 303.324.2955**

### Lead Story

Continued from page 11

Jonathan MacCarthy, Andy Darling, Joshua Feldman, Rebecca Garcia, Steve Hansen, and Zhu Zhang. For more information, see [www.ees.nmt.edu/Geop/CREST](http://www.ees.nmt.edu/Geop/CREST). More information on EarthScope can be found at [www.earthscope.org](http://www.earthscope.org).

### References

Humphreys et al., How Laramide-age hydration of North American lithosphere by the Farallon slab controlled subsequent activity in the western United States, *Int. Geology. Rev.*, 45, 575-595, 2003. <<



# In Memoriam: Lorraine Druyff

Lorraine Druyff, age 59, passed away peacefully at home following a brave battle with cancer. She is survived by her husband Jim, daughter Jennifer (Brian), grandchildren Cooper and Grace,

mother Edna, sister to Eileen (Don), Patricia, Mary, and Mike (Chris) as well as numerous nieces and nephews. Preceding her in death was her father Leo.

Lorraine was born and raised in Denver, Colorado to a large Irish-Catholic family. The family has many happy memories of spending time in the Colorado Mountains fishing and camping. Lorraine graduated from South High School with big dreams for the future. Lorraine was an accomplished cook and seamstress, which she learned while in 4-H.

As a young girl, Lorraine enjoyed the outdoors and swimming.

Her dreams carried her to sunny California where her career as a geologist began with her education at Cal State Long Beach. This was also the start of a long time love of the ocean and marine wildlife. Lorraine worked and supported herself through college. After graduating with a Bachelor of Science degree majoring in Geology, she returned to Denver and worked as a Petroleum Geologist for thirty years. Lorraine was an accomplished geologist and always in demand for her innovative skills as a petrographer and petrologist. She contributed to numerous professional papers and taught an industry course regarding petrophysical properties of cores and cuttings.

The family fondly remembers Lorraine's love of life and all things Irish. She loved to entertain and cook at home for family and friends. Thanksgiving was a special time, as Lorraine was always hosting the family feast, often cooking for thirty or more people that would come to the house looking for good food and laughter.

No year was complete without a trip to the beach with friends or family in tow. Some of Lorraine's favorite locations included Hawaii where she and Jim honeymooned. The family returned to Hawaii in February

of 2008 to celebrate Jim and Lorraine's 25th wedding anniversary. Other beach vacations include Cozumel, Belize, and Bermuda where Jim and Lorraine traveled many times showing off the beautiful coral reefs to friends and family. It was in Mexico where Lorraine showed her adventurous spirit and took up scuba diving and was an avid snorkeler as well. Lorraine also traveled to Ireland to visit extended family. Her work also allowed her to travel to many places in the United States and to Romania and Switzerland.

Her hobbies included stained glass, gardening, reading, and numerous other artistic crafts.

The family recommends that instead of flowers you may contribute to one of Lorraine's charitable causes. Donations can be made to:

Denver Dumb Friends League (<http://www.ddfl.org/tips.htm>), American Cancer Society (<http://www.cancer.org/docroot/home/index.asp>) or Delores Project (<http://www.thedeloresproject.org/>) <<




**Connie Wallace**  
Business Development Manager

[connie.wallace@rmtoc.doe.gov](mailto:connie.wallace@rmtoc.doe.gov)  
**direct** 307.233.4846  
**main** 307.233.4800  
**toll free** 888.599.2200  
**fax** 307.233.4851

U.S. Department of Energy  
907 N. Poplar, Suite 150  
Casper, WY 82601  
[www.rmtoc.doe.gov](http://www.rmtoc.doe.gov)

*Partnering to  
power the world.*



**Rocky Mountain Region  
Sandstone (0.5+ Bcf/well) and  
Naturally Fractured Shale  
Gas Reservoir Prospects**

**Contact:  
BlackrockResources@att.net**

**Blackrock Resources, LLC**  
P.O. Box 16963 Golden, CO 80402



# Higher Standards

7

DYNAMIC COMPANIES

50

NEW TECHNOLOGIES

38

WORLDWIDE LABORATORIES



## Weatherford<sup>®</sup> LABORATORIES

At Weatherford Laboratories, we hold fast to Higher Standards. Our purpose is to continually push past conventional solutions to find new and better ways to optimize oil and gas production.

■ By integrating seven entrepreneurial companies, we bring unsurpassed innovation to the industry. Our accomplishments include 50 new technologies, 45 original products, 35 industry awards, and 13 registered patents. Among our ranks are several luminaries of the industry, as well as scores of respected scientists who have authored hundreds of technical papers. ■ With 38 laboratories around the globe, our team raises the bar for wellsite sampling, core management services, geochemical analyses and evaluation of unconventional reservoirs.

At Weatherford Laboratories, we expect more from ourselves so you can expect more from us.

[Weatherfordlabs.com](http://Weatherfordlabs.com)

### CORPORATE OFFICES

ACS Laboratories Pty Ltd  
Brisbane, Australia

OMNI Laboratories  
Houston, Texas USA

ResLab Reservoir Laboratories  
Trondheim, Norway

Humble Geochemical Services  
Houston, Texas USA

TICORA Geosciences  
Denver, Colorado USA

Baseline Resolution, Inc.  
Houston, Texas USA

Hycal Energy Research Laboratories  
Calgary, Alberta, Canada

# The Mountain Geologist Best Paper Award for 2008

The RMAG is pleased to announce the winner of *The Mountain Geologist* Best Paper Award for 2008. The winning paper is "Stratigraphic and structural relations in the proximal Cutler Formation of the Paradox Basin: Implications for timing of movement on the Uncompahgre Front" by Katherine D. Moore, Gerilyn S. Soreghan, and Dustin E. Sweet.

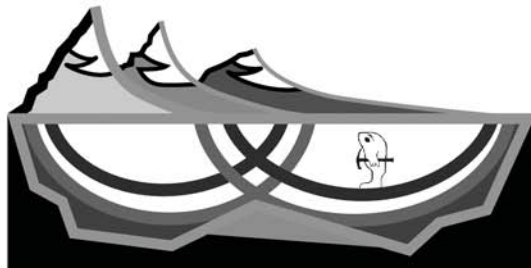
This extremely well written and illustrated paper describes detailed facies and structural mapping of the proximal Cutler Formation of the Paradox Basin and the interpretation that the Precambrian-Cutler (Permo-Pennsylvanian) contact is a depositional onlap rather than a fault. Bedding patterns of the proximal Cutler indicate primary depositional dips associated with a Gilbert-type delta system, and the absence of syndepositional tectonic

structures in the exposed Cutler in this area implies that thrusting on the subsurface Uncompahgre fault had ceased before deposition of the youngest Cutler strata.

The quality of papers published in the *Mountain Geologist* continues to be extremely high. Many wonderful papers were submitted this year making selecting one winner a very tough job. In reality, all the papers are winners, and we would like to thank all of the authors for publishing their outstanding work. If you haven't already, do yourself a favor and read not only the winning paper but all of the submissions.

Congratulations to Katherine, Gerilyn, and Dustin. <<

The Best Paper Selection Committee



## REVEAL THE ROCKIES

### 15th Annual 3-D Seismic Symposium



Conference Contact:  
Sandi Pellissier  
303-573-8621

[www.rmag.org](http://www.rmag.org)



Denver  
Geophysical Society



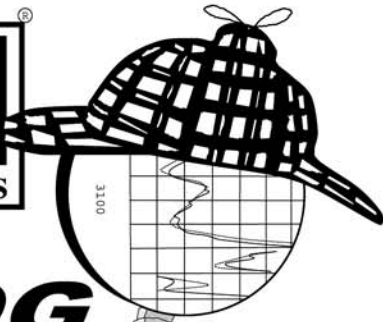
Rocky Mountain  
Association of Geologists

**March 27, 2009**

**Downtown Marriott Hotel  
Denver, Colorado**

**CALL FOR SPONSORS & EXHIBITORS**  
**Online Registration begins January, 2009**





**LOG**  
**Sleuth**  
**2000**

**AND RASTER IMAGE  
WELL LOGS**

**OVER  
5 MILLION  
LOGS  
AVAILABLE**

**1-800-310-6451**

**SALES@MJLOGS.COM**

**CALGARY • DENVER**

**U.S.A.  
LOGS FOR:**

**ALABAMA  
ALASKA  
ARKANSAS  
ARIZONA  
CALIFORNIA  
COLORADO  
FLORIDA  
IDAHO  
ILLINOIS  
INDIANA  
KANSAS  
LOUISIANA  
MICHIGAN  
MISSOURI  
MISSISSIPPI  
MONTANA  
NEBRASKA  
NEVADA  
NEW MEXICO  
NORTH DAKOTA  
OKLAHOMA  
OREGON  
SOUTH DAKOTA  
TEXAS  
UTAH  
WASHINGTON  
WEST VIRGINIA  
WYOMING**

**CANADIAN  
LOGS FOR:**

**ALBERTA  
BRITISH COLUMBIA  
SASKATCHEWAN  
MANITOBA  
FEDERAL AREAS**

# CONQUEST

Seismic Services, Inc.

**"exceptional service ... always!"**

## Full Wave 3-Component Seismic Recording

### CONTINUOUS DEVELOPMENT

Conquest Seismic Services has over the past few years worked closely with various manufacturers to combine industry standard and emerging technologies in order to increase both the seismic spatial resolution and field productivity. The former is aimed at improving the seismic image, the latter at controlling the cost of the improvements.

By combining ARAM's flexibilities with Conquest's field experience a cost effective, high resolution, 3-component product can be provided.

### ARAM ARIES-MC

- 3-C High Spurious-free Frequency
- 24 bits digital acquisition
- 1/4ms, 1/2ms, 1ms, 2ms, 4ms sample rates
- Reduced power consumption
- Advanced QC & Maintenance tools
- Vibroseis or impulsive recording
- -40C to +70C operations



**ARIES-MC 3C Sensor**

### QUALITY CONTROL FEATURES

The acquisition of seismic data from thousands of channels requires the ability to ensure the quality of the data using:

- Intuitive graphic display of quality attributes
- Unique Azimuth-Corrected Orientation Q.C.
- GPS Integration
- System generated observer's notes

### BENEFITS

ARAM ARIES-MC is designed to:

- Reduce the environmental footprint
- Reduce crew size
- Reduce mobilization costs
- Reduce maintenance costs
- Improve productivity
- Improve Health and Safety
- Increase spatial sampling



**10,884 Channel Acquisition**

Colorado  
Conquest Seismic Services, Inc.  
Suite 100 - 6430 S. Fiddler's Green Circle  
Greenwood Village, Co. 80111  
Phone: (303) 287-5700  
Fax: (303) 287-6688

New York  
Conquest Seismic Services, Inc.  
504 IST Center,  
Horseheads, NY 14845  
Phone: (607) 562-2220  
Fax: (607) 562-2227

[www.conquestseismic.com](http://www.conquestseismic.com)



# It's Not Just Software...

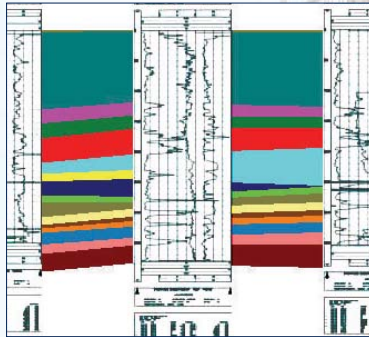
# It's RockWare.

For Over 25 Years.

## RockWorks™

Downhole Data Management, Analysis & Visualization

- Streamlined well manager includes:
  - Deviated Survey Data
  - Lithology
  - Stratigraphy
  - Permeability, Porosity, etc.
  - Downhole Geophysics
  - Oriented Fractures
  - ... and more
- Interactively pick formation tops from raster e-logs.
- Generate well logs, cross-sections, fence diagrams, and stratigraphy models.
- 2D (e.g. structure, isopachs) and 3D (porosity/permeability) contouring and volumetrics.
- Includes RockWorks Utilities



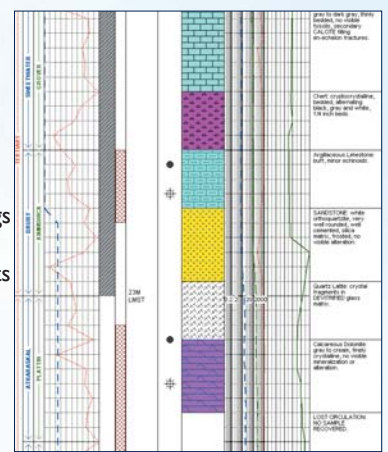
Free trial available at [www.rockware.com](http://www.rockware.com).

**\$2,499**

## LogPlot™

Powerful, Flexible, Easy-to-Use Borehole Log Software

- Dozens of templates available or design your own in the drawing-style log designer window
- Tabbed data sheets
- Import/Export data from LAS, Excel, RockWorks
- Paginated and continuous logs at any vertical scale
- Export to a variety of formats
- Free viewer can be distributed to clients



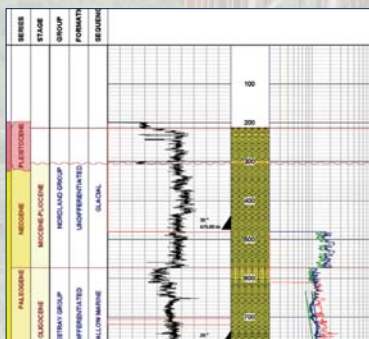
Free trial available at [www.rockware.com](http://www.rockware.com).

**\$699**

## WellCAD™

Well Log Data Management

- PC-based composite log package, combining comprehensive graphic editing and data processing tools
- Integrates all data acquired in a well into a single document
- Combines excellent display, editing and analysis capabilities for well data



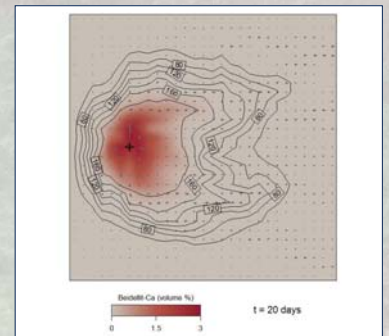
Free trial available at [www.rockware.com](http://www.rockware.com).

**\$3,120**

## The Geochemist's Workbench™

GWB is the premiere software solution for simulation of:

- Scaling
- Souring
- Flooding
- Formation damage
- Frac jobs
- Fluid compatibility



GWB Standard  
Reaction Path Modeling

**\$3,499**

GWB Professional  
1D/2D Reactive Transport Modeling

**\$7,999**



Since 1983

303.278.3534 • 800.775.6745

RockWare.com



WWW.**GeoSteering**.com

Services      Realtime / LAS      Software



**Infopipe**  
DATA - COMPONENTS - CULTURE  
Fed & State Lease Information  
BLM Join-Ready Lots & Tracts  
Geo-Referenced to your GRID  
New Infoshape GIS tool



Darrell.Connelly@infopipe.com 303-973-7459 www.infopipe.com



# Vista GeoScience

*Providing Geochemical Services to Reduce Risk  
and Protect Energy Assets for Over 20 Years*

## **EXPLORATION SERVICES**

Geochemical Surveys for Oil, Gas, & Uranium  
Domestic & International - Onshore & Offshore  
Gas & Liquid Hydrocarbons - Aromatic Fluorescence  
Dissolved C1-C6 Gases - Radon, Helium & Fixed Gases  
Passive Soil Gas - Deeper Direct Push Soil & Gas Sampling  
Statistical Interpretation - GIS Mapping  
Integration with Geologic and Geophysical Data

## **ENVIRONMENTAL SERVICES**

Establish & Monitor Baseline Environmental Conditions  
Before Developing CBM, Tight Gas Sands, Gas and Oil Shale,  
Carbon Sequestration & Enhanced Recovery Projects.  
Infrastructure, Natural Gas Leak/Seep & Flux Surveys  
Water Well Monitoring & Ground Water Analysis  
Forensic Geochem Methods to Trace Contaminant Sources

Vista GeoScience LLC, 130 Capital Drive, Suite C, Golden, Colorado 80401  
Phone: 303.277.1694 Web: www.VistaGeoScience.com E-Mail: info@VistaGeoScience.com



Randy Luckiw  
*Vice President  
USEC*

Phone: 303-287-5700  
Fax: 303-287-6688  
Cell: 303-501-0039

6430 S. Fiddler's Green Circle  
Suite 100  
Greenwood Village, CO 80111 E-mail: rluckiw@conquestseismic.com  
www.conquestseismic.com



Richard (Dick) Davis  
*U.S. Marketing Consultant*

Phone: 720-536-2325  
Fax: 303-287-6688  
Cell: 303-945-0479

6430 S. Fiddler's Green Circle  
Suite 100  
Greenwood Village, CO 80111 E-mail: dickd@conquestseismic.com  
www.conquestseismic.com



Steve Solokis  
*Vice President  
US Operations*

Phone: 303-287-5700  
Fax: 303-287-6688  
Cell: 303-324-2304

6430 S. Fiddler's Green Circle  
Suite 100  
Greenwood Village, CO 80111 E-mail: steves@conquestseismic.com  
www.conquestseismic.com

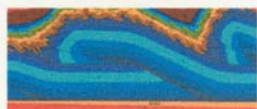


Jeff Hislop  
*Manager of Geophysics*

Direct: 720-536-2332  
Office: 303-287-5700  
Cell: 303-704-1298

6430 S. Fiddler's Green Circle  
Suite 100  
Greenwood Village, CO 80111 E-mail: jeffh@conquestseismic.com  
www.conquestseismic.com





### Technically Write Consulting, LLC

Thomas L. De Keyser, Ph.D. 19337 Hill Drive  
Morrison, CO 80465-2440  
Petrographic reservoir characterization, core & cuttings description, sequence stratigraphy, basin studies  
Phone: 303-697-1786  
Cell: 303-868-0994  
E-mail: dekeyser@wispertel.net  
www.crienterprises.com

## NeoGeo: (n) a new member of the professional geoscience industry

By Cat Campbell



NeoGeos at the Marlowe's happy hour, from left, Katie Ransbottom, Becky Kowalski, Raffaello Sacerdoti, and Rick Nelson.

A new generation of geoscientists is steadily making its way into the industry allowing for new and unique networking and idea exchange opportunities. RMAG, in response to this flux of recently graduated professionals, created an extension known as the NeoGeos. The first formal meeting of this group took place on September 10th, at Earls, and was greeted with success! Leah Crosier, the contact for the NeoGeos says, "People enjoyed getting to catch up with their former classmates, colleagues and friends."

This new branch of RMAG joins Next Generation Landmen from DAPL, Young Professionals of SPE, from SPE, and groups from DGS and COPAS in the overall Next Generation Oil and Gas Professionals group, whose objectives include interdisciplinary outreach and networking events designed to create an active core of young professionals who will someday be the leaders of our industry. A happy hour event was held by the larger group on November 13, with over 300 young professionals in attendance.

If you are new to the industry and are interested in becoming part of this group or just want to learn more, please contact Leah Crosier at [leah@petro-fs.com](mailto:leah@petro-fs.com) or

**GOOLSBY BROTHERS and associates, inc.**  
Geological and Petrophysical Consulting to the Energy Industries



Expert Wellsite Supervision  
(303) 773-3514  
[www.goolsbybrothers.com](http://www.goolsbybrothers.com)



**ALLPOINTS**   
geographic information systems

GIS Training Geared to Industry Data & Workflows  
Geospatial Data Management Consulting  
Experienced Matters/20+ Years in O&G



Deb Grieco • [deb@allpointsgis.com](mailto:deb@allpointsgis.com) • 303.324.2955




**MARTY HALL**  
US Marketing / Sales Manager  
Onshore

---

**Petroleum Geo-Services** Tel: +1 (720) 851 6152  
P.O. Box 549 Mobile: +1 (303) 885 8860  
7765 Windwood Way  
Parker, CO 80134  
USA  
[marty.hall@pgsonshore.com](mailto:marty.hall@pgsonshore.com) [www.pgs.com](http://www.pgs.com)

**Michael Deaver**  
Seismic Manager

"Your Source for dBX"



**Buckley Powder Co.**  
11619 Melody Garden  
Cypress, Texas  
77429-5395 USA  
Phone: 713 201 4495  
Fax: 281 251 8565  
E-mail: [michaeld@buckleypowder.com](mailto:michaeld@buckleypowder.com)

**DYNO**  
Dyno Nobel

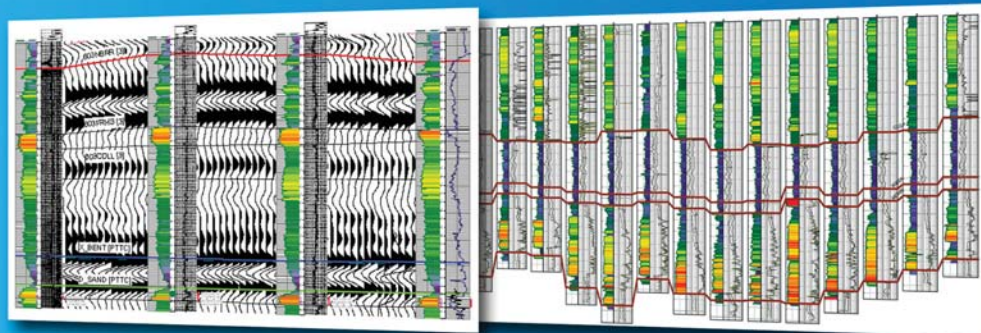
Alexandra Fleming at [Alexandra.Fleming@whiting.com](mailto:Alexandra.Fleming@whiting.com). Also, sponsorship opportunities exist if your company would like to take part in this growing community! Several happy hours and other events including volunteering projects are planned for 2009. <<

# Define your geological model faster than ever before

**NO MORE WAITING!** Available today from IHS, easy and affordable access to one of the largest U.S. digital log collections

- More than 185,000 LAS files with over 1.5 million curves
- Regional subscription packages for today's active play areas
- Indexed to IHS well and production data
- Linked to the IHS Enerdeq® Browser for quick regional studies and log selection
- Available via IHSLogNet.com or on DVD
- Ready to use in PETRA and other log packages

Request a free 2' x 3' IHS digital log coverage map at [ihs.com/energy/DigitalLogs](http://ihs.com/energy/DigitalLogs)



Use PETRA® to integrate digital log, well, production, perf, seismic and tops data. IHS is the only company to provide you with the complete picture.

Why wait? Subscribe today! Call **888.OIL.DATA** (645.3282) or e-mail [sales.energy@ihs.com](mailto:sales.energy@ihs.com)



**The Source**  
for Critical Information and Insight™

The Rocky Mountain Association of Geologists Presents  
***Review and Interpretation of Rocky Mountain  
Foreland Structures***  
***Exploring Descriptive, Kinematic and Dynamic Analyses  
with Simple Tools, Models and Methodologies,  
and Avoiding Common Pitfalls***  
by Donald S. Stone

**Tuesday, January 27, 2009 at the Marriott Hotel, Downtown Denver  
Registration begins at 7:15 a.m., Course starts at 8:00 a.m.**

Registration fee includes course notes, continental breakfast, refreshment breaks,  
and an end of event social hour.

-----  
**REGISTRATION FORM**

Name: \_\_\_\_\_ Name Tag: \_\_\_\_\_  
Company: \_\_\_\_\_ Email: \_\_\_\_\_  
Address: \_\_\_\_\_  
City: \_\_\_\_\_ State \_\_\_\_\_ Zip \_\_\_\_\_ Phone \_\_\_\_\_

\_\_\_ Registration fee THROUGH December 31, 2008 for RMAG Members: \$140.00 \$ \_\_\_\_\_  
\_\_\_ Registration fee THROUGH December 31, 2008 for Non-Members: \$155.00 \$ \_\_\_\_\_  
\_\_\_ Registration fee AFTER December 31, 2008 for BOTH Members & Non-Members \$170.00 \$ \_\_\_\_\_  
\_\_\_ Full-Time Student Registration (Student ID Number required) \$40.00 \$ \_\_\_\_\_

**No cancellations or refunds after December 31, 2008 Total enclosed \$ \_\_\_\_\_**

Payment: [ ] Check (payable to RMAG) [ ] Visa [ ] Mastercard [ ] American Express

Name on Credit Card (Print): \_\_\_\_\_

Card No.: \_\_\_\_\_ Expiration Date: \_\_\_\_\_

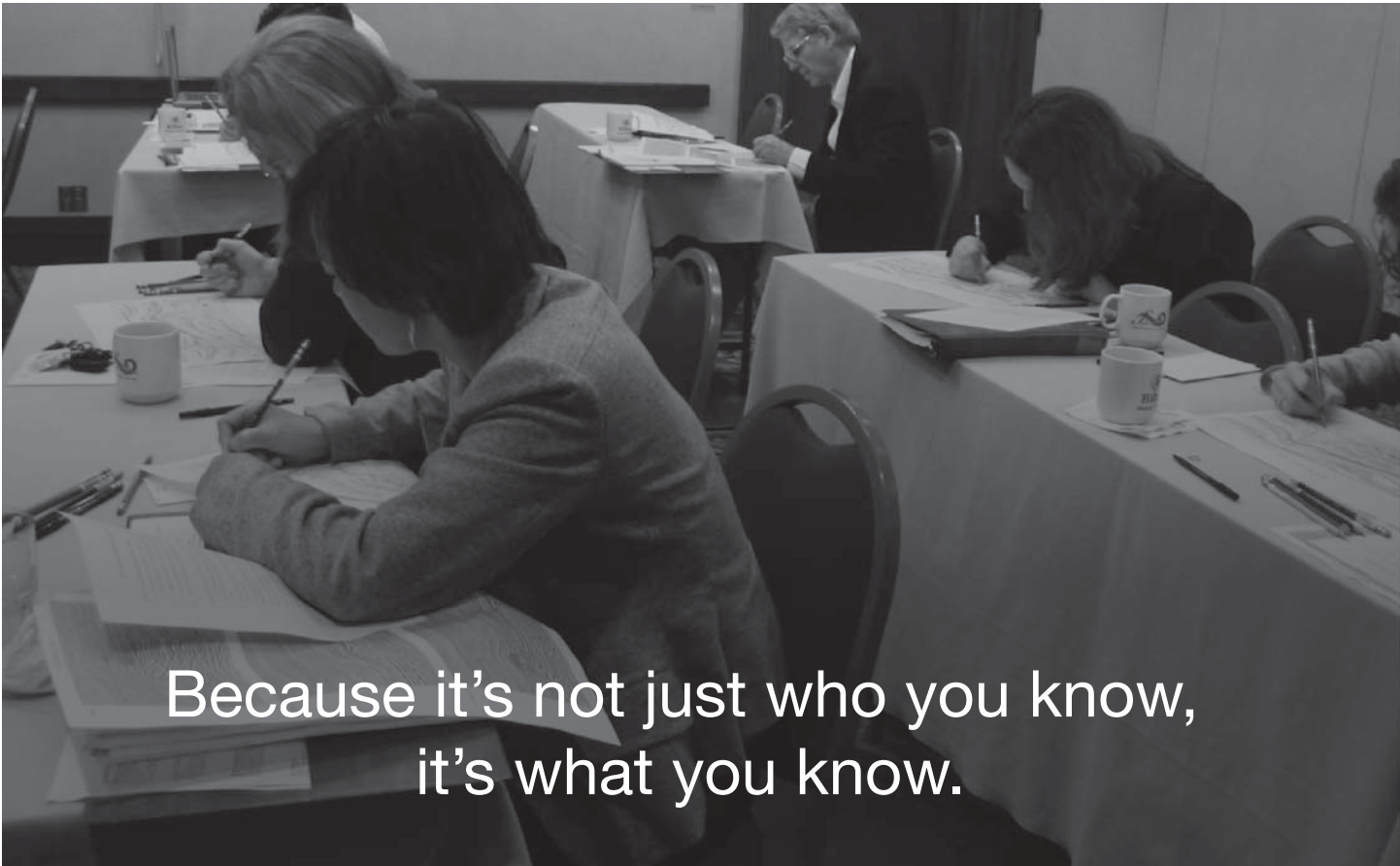
Zip Code of Billing Address: \_\_\_\_\_

Signature (credit cards only) \_\_\_\_\_

Mail or FAX this registration form to:  
RMAG, 820 16<sup>th</sup> St., Ste. 505, Denver, CO 80202, 303-573-8621, FAX: 303-628-0546

For Online Registration: <http://www.rmag.org> You must receive a confirmation notice by return email  
within 24 hours or your registration was not accepted by our computer.





Because it's not just who you know,  
it's what you know.

The 6th Annual AAPG Winter Education Conference  
February 9 - 13, 2009 / Norris Conference Center / Houston, Texas

**11 GREAT COURSES**

- Deep-Water Sands—Integrated Stratigraphic Analysis
- Seismic Stratigraphy and Seismic Geomorphology
- Rock Properties of Tight Gas Sandstones
- Introduction to Coalbed Methane
- Assessment of Unconventional Shale Resources Using Geochemistry
- Geological Interpretation of Seismic Data
- Multi-Component Seismic Stratigraphy
- Basic Openhole Log Interpretation
- Formation Evaluation of Thinly-bedded Reservoirs
- Quick Guide to Carbonate Well Log Analysis
- Seismic Amplitude Interpretation—Lithology and Pore Fluid Estimation

TO REGISTER, OR FOR MORE INFORMATION, CALL 888-338-3387 OR VISIT [WWW.AAPG.ORG/WEC](http://WWW.AAPG.ORG/WEC)

\$1595 (AAPG Members) • \$1695 (Non-Members) • Price increases \$100 after January 12, 2009  
*Courses may be purchased individually.*

©2008 AAPG

[www.aapg.org/wec](http://www.aapg.org/wec)  
More science than you can shake a pick at.



# New Members

## WELCOME TO NEW MEMBERS

Todd Peters

Todd Peters is a Geoscience Technical Coordinator for Pioneer Natural resources located in Denver, CO.

Jennifer Walker

Jennifer Walker is a Geologist for Encana Oil and Gas located in Denver, CO.

Laura Pommer

Laura Pommer is a Geoscientist for Williams Company in Denver, CO.

Colin O'Farrell

Colin O'Farrell is a Geologist for Pioneer Natural Resources located in Denver, CO.

John Byrd

John Byrd is a Senior Geological Advisor for Hess Corporation located in Houston, TX.

Lyn Canter

Lyn Canter is a senior Sedimentologist for Whiting Petroleum located in Denver, CO.

Ryan Sincavage

Ryan Sincavage is an Instructor for the University of Colorado Denver located in Denver, CO.

Gary Gianniny

Gary Gianniny is an Associate Professor for the Department of

Geosciences at Fort Lewis College located in Durango, CO.

Gary Newman

Gary Newman currently resides in Gig Harbor, WA.

## WELCOME TO NEW ASSOCIATES

Gwen Pech

Gwen Pech is a Senior Systems Administrator for TerraSpark Geosciences, L.P. located in Boulder, CO. <<



30 Years Oil and Gas  
Industry Experience  
CPG 8653

**Anne D. Weber, Managing Attorney**

Acquisitions • Divestitures • Industry Agreements

1580 Lincoln St., Suite 700  
Phone: 303-893-2004

Denver, CO 80203  
[aweber@weberlawfirm.us](mailto:aweber@weberlawfirm.us)

**Oil & Gas**  
*Explore the Depths of Our Experience.*

**Consulting Expertise Includes:**  
Heavy Oil • Gas • CBM-CMM • Oil Sands • Coal • Mature Fields  
CO<sub>2</sub> Capture & Sequestration • Enhanced Oil Recovery

**NORWEST**  
CORPORATION

[www.norwestcorp.com](http://www.norwestcorp.com)  
1010 10th Street • Golden, CO 80401 • Tel 303.277.1629 • Toll Free 1.866.277.1629



# Advertisers Index

AAPG ..... 6, 32	Goolsby Brothers .....29	Rockware.....27
APPEX London ..... 9	Hoak, Thomas .....15	Rocky Mountain Oilfield Testing..22
A2D/TGS.....2	IHS.....30	Sherwin Geological Resources ....17
Allpoints GIS..... 21, 29	Infopipe.....28	Sinclair Petroleum Engineering...13
Automated Mudlogging Systems 15	Innovative Geo-Tech Resources...17	Technically Write Consulting .....29
Blackrock Resources LLC .....22	International Pavilion .....16	Texas Geological, Inc.....15
Buckley Powder Company.....29	MJ Systems .....25	Vista GeoScience.....28
Canadian Discovery ..... 7	Mazzullo Energy.....13	Weatherford Laboratories.....23
Conquest Seismic Services... 26, 28	Neuralog .....35	Weber Law Firm, LLC.....33
The Enlighten Foundation .....36	Norwest Corporation .....33	WesternGeco.....14
Geological Consultants .....13	PGS/Marty Hall.....29	Whitestar.....20
Geosteering.....28	PTTC..... 4	

## January 2009

SUNDAY	MONDAY	TUESDAY	WEDNESDAY	THURSDAY	FRIDAY	SATURDAY
				1 NEW YEAR'S DAY	2	3
4	5	6	7	8	9 DIPS Luncheon	10
11	12	13 Desk and Derrick Luncheon	14	15	16 RMAG Luncheon Speaker: Pete Stark	17
18	19	20 DWLS Luncheon	21	22	23	24
25	26	27 RMAG Short Course RMS-SEPM Luncheon	28 Oilfield Christian Fellowship	29 SIPES Luncheon	30	31



## Scan, print, digitize, interpret and manage data with...

### NeuraScanner

- Scans any length log, map, etc. up to 12" width
- Color or B&W scans up to 10" per second
- Image viewing and editing software included

### NeuraLaser

- Prints any length raster or LAS log up to 14" width
- Full or halfscale up to 4" per second
- Image viewing and editing software included

### NeuraLog

- Automated log digitizing and QC
- Depth calibrate logs for quick interpretation
- Interactive curve editing for analysis quality data

### NeuraDB - NEW!

- Corporate repository of your well file data
- Management of your raster and digital E&P data
- PPDM based with optional ArcMap interface

### NeuraSection

- Makes quality structural or stratigraphic sections
- Auto-load popular vendor data
- Reserve estimates quickly and accurately

### NeuraMap - NEW!

- Volumetrics, reserves and custom reports
- Automated digitizing of contours, shot points etc.
- Interactive contour editing and QC

**For more information call 720.981.4282  
Or, visit: [www.neuralog.com](http://www.neuralog.com).  
You'll be glad you did.**

# Neuralog

*Turning Paper Into Petroleum*

© Neuralog, Inc. • 1.281.240.2525 • [www.neuralog.com](http://www.neuralog.com)



# Rocky Mountain Association of Geologists

820 16th Street, Suite 505

Denver, CO 80202

Non-Profit Org.

U.S. Postage

PAID

Permit No. 901

Denver, Colo.

The Petroleum Partners are a consortium of Christian oil and gas professionals that are committed

## Thank You

We would like to thank the members of The Enlighten Foundation Petroleum Partners for helping to complete a church in Zimbabwe to house The Project Sparkle Early Learning Center, and to begin the building of a new church in Armenia to house The Project Sparkle Program there.

We'd also like to thank the following corporations for their generous philanthropic matching policies!

EnCana Corp., Halliburton, Williams Energy,  
A B Production Company, and St. Croix Exploration

For more information on the powerful work of the Petroleum Partners worldwide, visit [www.EnlightenFoundation.org](http://www.EnlightenFoundation.org)

*Thank you for bringing hope in the midst of despair*



Pictured from left to right: Darrell Finneman, Lynn Becker, Georgia Kofoed, Michael Cuba, Mike Mullen, Nadine Mullen, Gary Alsobrook, Bill Griffith, Brian Bess, Jeff Llewellyn, and Paul Melnychenko.

Not pictured: Bob Brooks, Mike Sewell, Greg and Evelyn Kastner, Patrick and Jan Rutty



testament to the giving potential of the petroleum industry!

to giving back. Together, they provide the brick and mortar

funds to build community and educational centers in churches around the world. They stand as